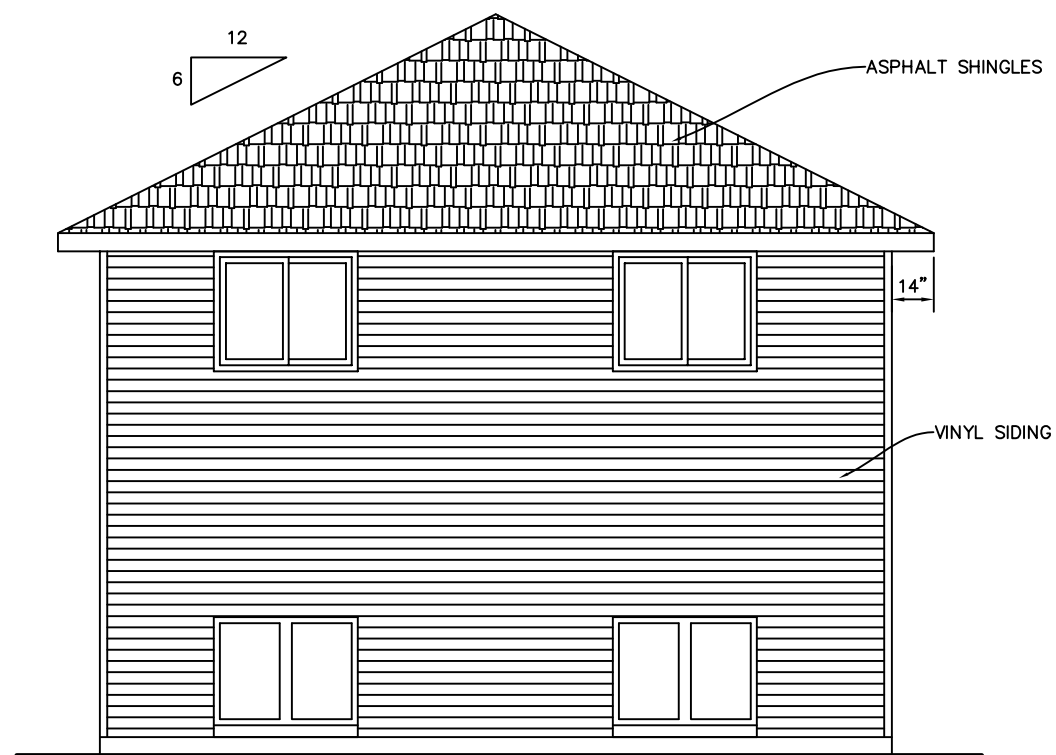
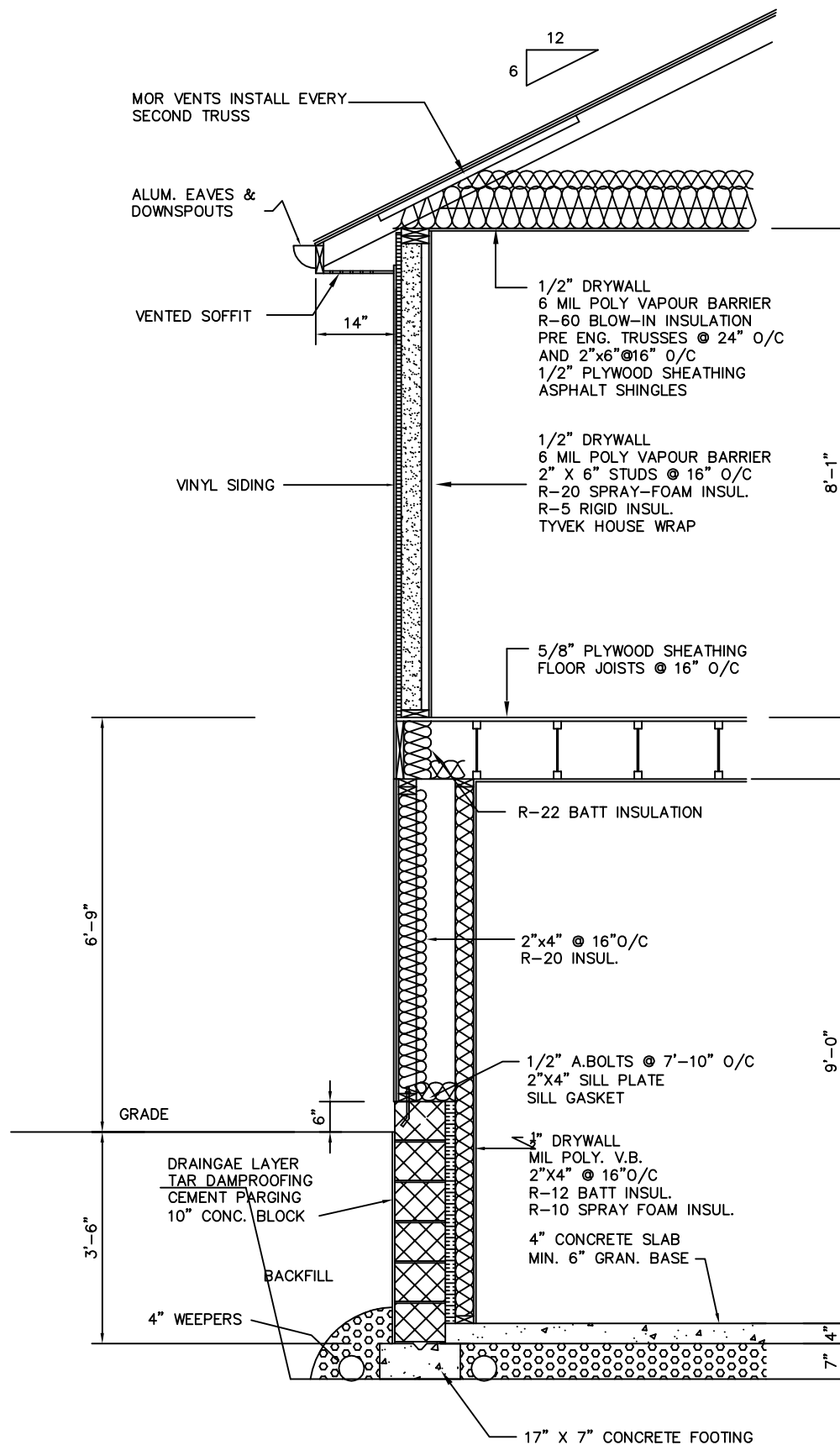


FRONT ELEVATION



BACK ELEVATION



WALL SECTION

SCALE: 3/8" = 1'-0"

COMPLIANCE PACKAGE A1



ELEVATIONS & WALL SECTION

SCALE: 3/16" = 1'-0"

JUNE 1, 2020

HABITAT - ST. LUKE, WINDSOR